

2^{me} Quatuor à Cordes

DARIUS MILHAUD

1914-1915

1^{er} Mouvt: Modérément animé.1^{er} VIOLON2^{me} Mouvt: Très animé.

I

1^{er} Mouvt: ♩ = 84

ff

6

f

A

très 'marque

Pressez

2^e Mouvt: ♩ = 132

ff

5

mf

B 4^e Corde

f

2

mf *augmentez* *f* Cédez

1^{er} Mouvt. ♩ = 84

2^e Mouvt. ♩ = 132

p *p*

pp 4 *décidé*

Ral. Mouvt

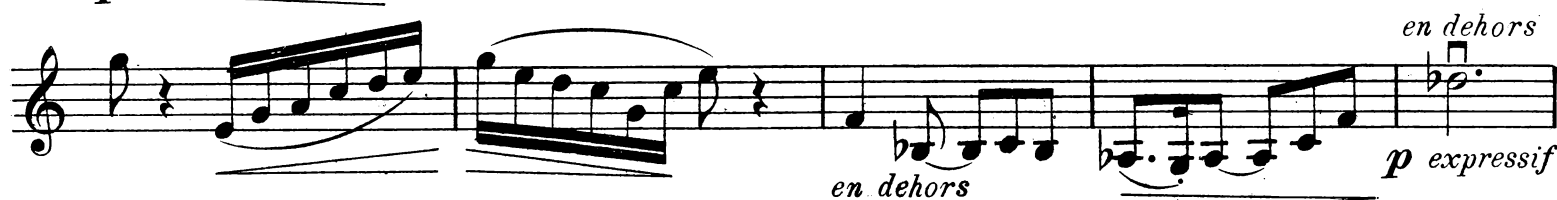
augmentez *f*

ff *sec.* *mf*

f *ff brutal*

1^{er} VIOLON

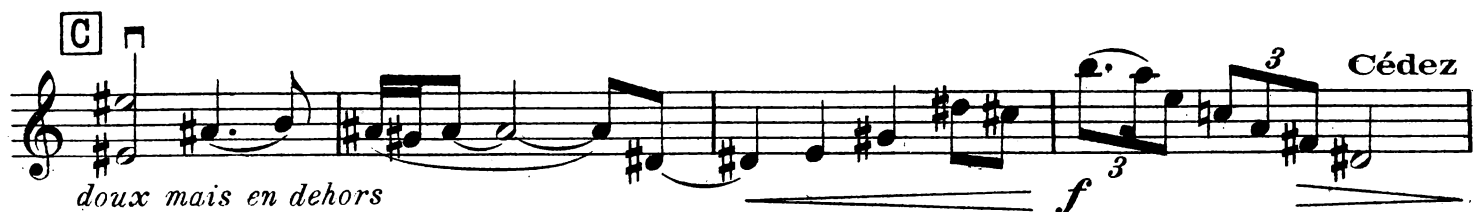
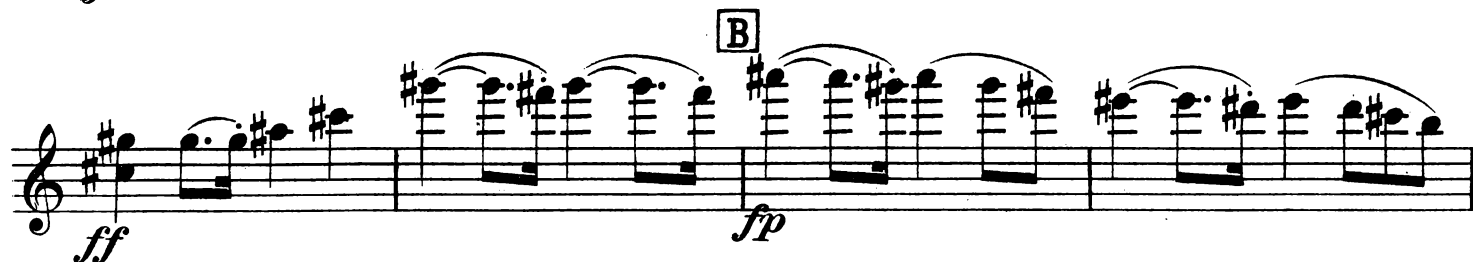
Elargissez

1^{er} Mouvt. ♩ = 84

pp *p* *tr* *p* *Moins animé* *p* *pp* *mf* *Cédez* *pp* *Lent, large* $\text{♩} = 80$ *p* *Plus lent*

II

Très lent $\text{♩} = 72$
 Cédez un peu Au mouv^t



Mouv^t

[D]

pp

augmentez

p

p

Moins lent

12

2^e Violon

[E]

1^{er} Violon

f

f

ff

Animez

[F]

ff

Cédez

Ral.

Mouv^t du début
(à la 2^e mesure)

7

pp très expressif et très égal

3

3

III

Très vif ♩ = 176

sourdine *p*

Cédez **A** Mouvt: *p*

mp

B *f*

C *pp* *f*

mp *f* *mp*

D *p* *tr*

tr *tr* *tr* *tr* *tr* *tr* **E** *tr*

9 pizz. *p* *pp*

2 archet *p*

F *f* *p*

augmentez

G *mf*

augmentez

ff

H

pizz *mf* *mp* *p* 2

archet
pp

I

Cédez

Mouv^t

mp

J

3

ff

5

sf

K

mp

Ral. **L** pizz.

p

Moins animé

archet

Ralentissez encore

p

Plus lent

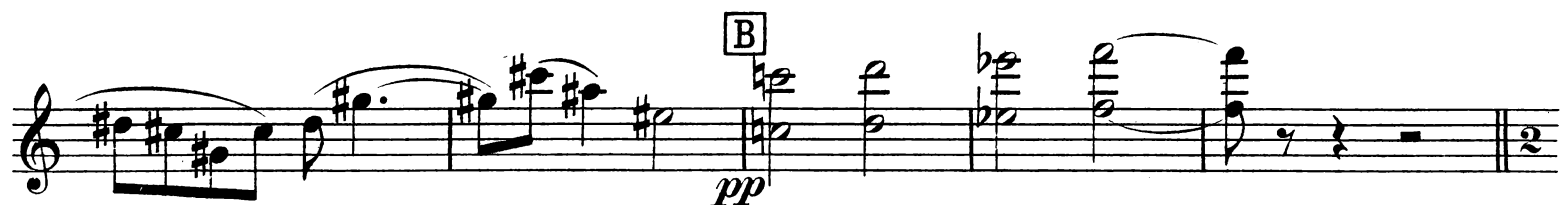
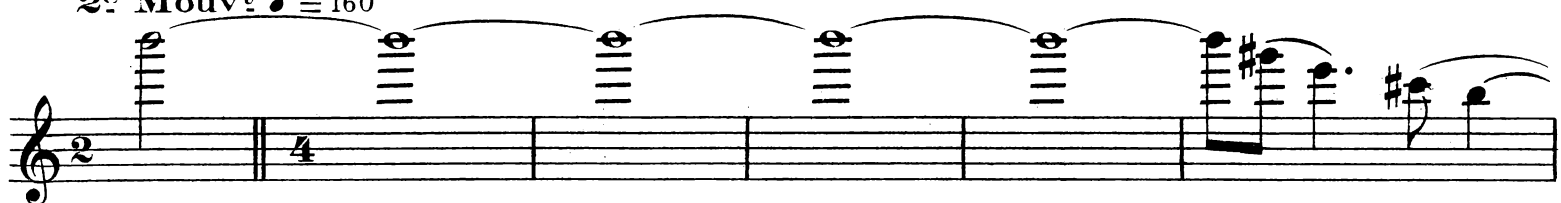
Mouv^t du début

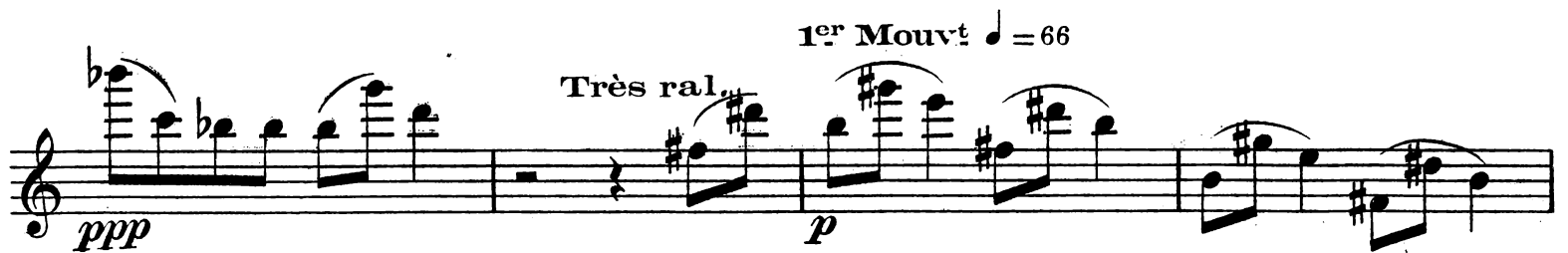
8

pp

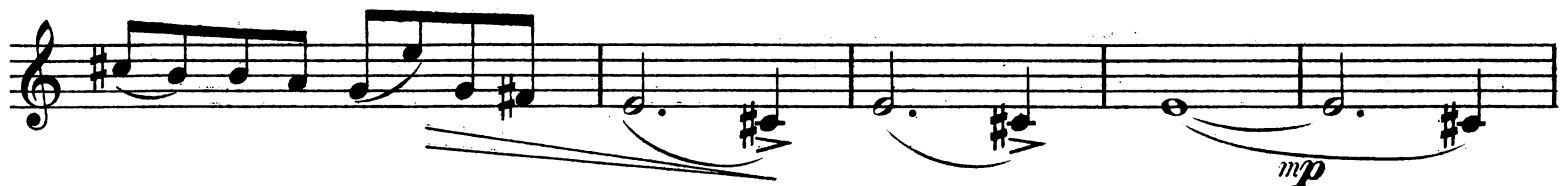
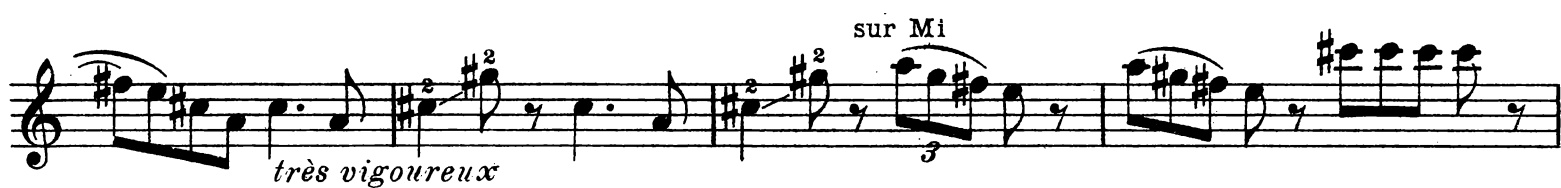
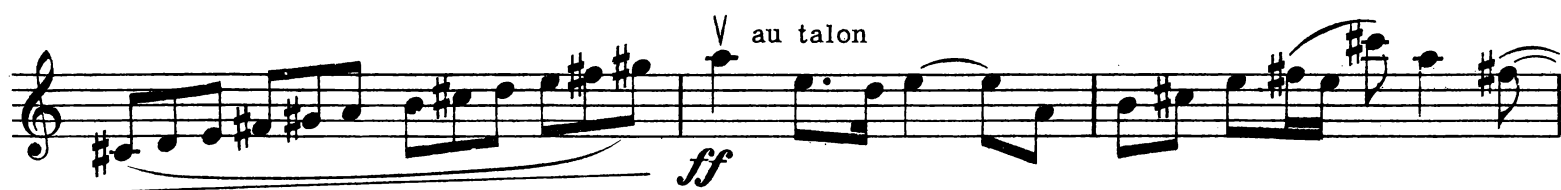
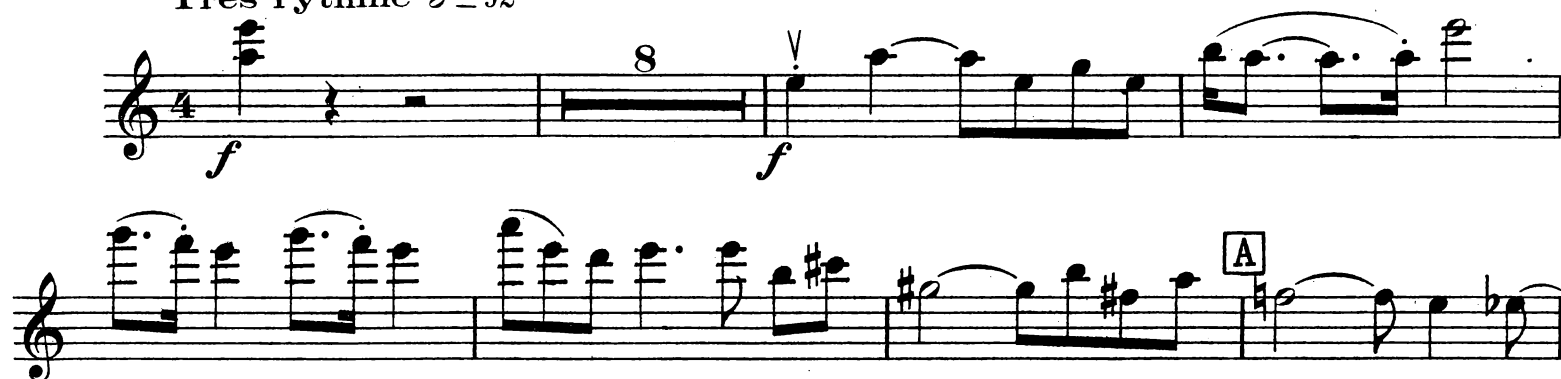
1^{er} Mouvt: Souple et sans hâte.

IV

2^{me} Mouvt: Assez animé et gracieux.1^{er} Mouvt: ♩ = 662^e Mouvt: ♩ = 160



V

Très rythmé $\text{♩} = 92$ 

pp *pp* *mp* *p très égal* *E* *mf* *augmentez* *ff* *pizz.* *p* *G* *archet* *pp* *5* *3*

4 [H]

5

p

8 [I] *douloureusement*
très expressif

3

ppp

3

expressif

4

[J] *p*

pressez et augmentez

[K] *f*

augmentez

ff

Detailed description: This page contains the musical score for the first violin part, measures 16 through 31. The notation is in treble clef with a key signature of one flat (B-flat). Measure 16 begins with a whole rest, followed by a half note B-flat, a quarter note A-flat, and a half note G-flat. Measure 17 contains a four-measure rest, a half note A-flat, a quarter note G-flat, and a half note F. Measure 18 features a five-measure rest, a half note E-flat, a quarter note D-flat, and a half note C. Measure 19 has a six-measure rest, a half note B-flat, a quarter note A-flat, and a half note G. Measure 20 contains a seven-measure rest, a half note F, a quarter note E-flat, and a half note D. Measure 21 starts with an eight-measure rest, followed by a half note C, a quarter note B-flat, and a half note A. Measure 22 has a nine-measure rest, a half note G, a quarter note F, and a half note E. Measure 23 contains a ten-measure rest, a half note D, a quarter note C, and a half note B. Measure 24 features an eleven-measure rest, a half note A, a quarter note G, and a half note F. Measure 25 has a twelve-measure rest, a half note E, a quarter note D, and a half note C. Measure 26 contains a thirteen-measure rest, a half note B, a quarter note A, and a half note G. Measure 27 features a fourteen-measure rest, a half note F, a quarter note E, and a half note D. Measure 28 has a fifteen-measure rest, a half note C, a quarter note B, and a half note A. Measure 29 contains a sixteen-measure rest, a half note G, a quarter note F, and a half note E. Measure 30 features a seventeen-measure rest, a half note D, a quarter note C, and a half note B. Measure 31 has an eighteen-measure rest, a half note A, a quarter note G, and a half note F. The score includes various performance markings: *p* (piano) at measure 19, *ppp* (pianissimo) at measure 21, *f* (forte) at measure 27, and *ff* (fortissimo) at measure 31. Dynamic and articulation markings include *douloureusement* (painfully) and *très expressif* (very expressive) at measure 22, *pressez et augmentez* (press and increase) at measure 28, and *augmentez* (increase) at measure 30. Fingerings are indicated by numbers 4, 5, 8, and 3. A section marked [H] spans measures 17-18, [I] spans measures 22-23, [J] spans measures 28-29, and [K] spans measures 27-28. The piece concludes with a double bar line at the end of measure 31.

Au Mouvt

f

très vigoureux

ff

f

pizz. *p* *8* *archet* *pp*

très doux