

YOU MAY BE LONESOME

But You'll Be Lonesome Alone



Ted Browne Music Co.
(INC.)
218 SOUTH WABASH AVE.
Chicago

by
ART GILLHAM
and
BILLY SMYTHE

PRINTED IN U.S.A.

RECITATION FOR

YOU MAY BE LONESOME
(But You'll Be Lonesome A-lone)

By
ART GILLHAM
and
BILLY SMYTHE

You never realized when you had me
What a wonderful love you possessed
You never realized when you kissed me
How true to you were the lips that you pressed
I never thought a woman (man) could treat a man (woman)
As wonderful as you treated me
But you were not true
And what's more you never could be
You taught me to love
You taught me to care
But I was just a toy to you
Do you think that was fair?
All my hopes, my joys, my life
Were centered in your success
And I did every thing in my power
To give you happiness
But when you left me for some-one-else
You turned my heart to stone
You may be lonesome, but you'll be lonesome a-lone.

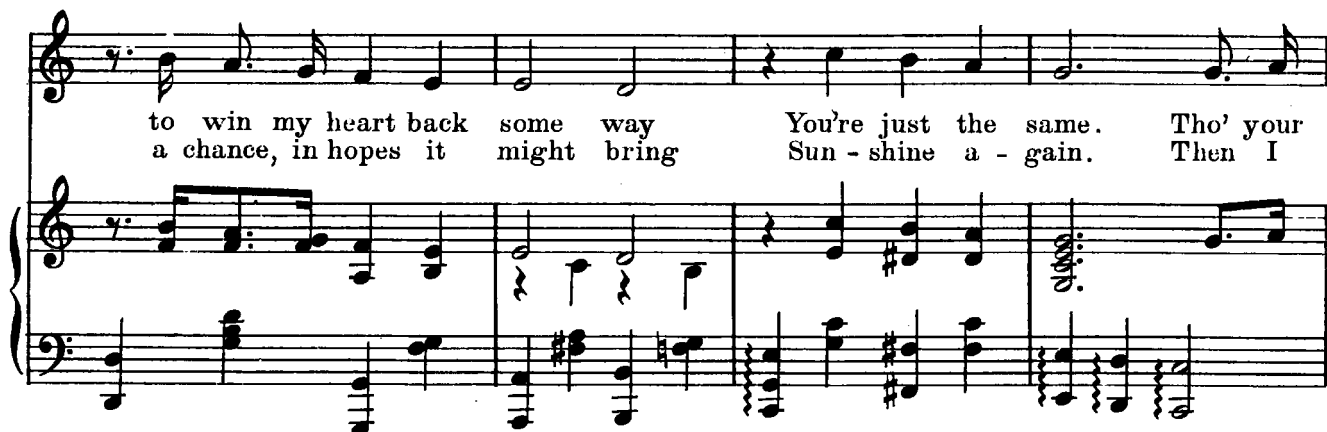
"You May Be Lonesome"

(BUT YOU'LL BE LONESOME ALONE)

By ART. GILLHAM
and
BILLY SMYTHE



Voice



Copyright MCMXXIV by Ted Browne Music Co. Inc.
218 So. Wabash Ave. Chicago, Ill.

British Copyright Secured

All Rights Reserved

words sound ver - y nice, It's a fool who gets caught twice.
took you back a - while, And I tried so hard to smile.

Now that I'm leav-ing you; 'Tho it is grieving you. You're all to blame. You may be
But ev-'ry time I try, You on-ly make me cry. It's all in vain. You may be

CHORUS

lone - some _____ and want sympa - thy _____ Yes you'll be

lone - some _____ When you think of me _____ Now your heart might ache _____

And may-be you'll pine _____ But your heart should break _____

The way you broke mine 3 You say you're sor - ry

This system contains the first line of the song. The vocal melody is on a treble clef staff, and the piano accompaniment is on grand staves (treble and bass clefs). The key signature has one sharp (F#). The lyrics are 'The way you broke mine' followed by a triplet of eighth notes, then 'You say you're sor - ry'.

Then, just tell me why 3 You made me wor - ry

This system contains the second line of the song. The vocal melody continues on the treble clef staff. The piano accompaniment features a triplet of eighth notes in the right hand. The lyrics are 'Then, just tell me why' followed by a triplet, then 'You made me wor - ry'.

And you made me cry — You're sor - ry just too

This system contains the third line of the song. The vocal melody has a long note followed by a dash, then continues. The piano accompaniment has a triplet of eighth notes. The lyrics are 'And you made me cry —' followed by 'You're sor - ry just too'.

late For my love has turned to hate; You may be lone - some

This system contains the fourth line of the song. The vocal melody has a long note followed by a dash, then continues. The piano accompaniment has a triplet of eighth notes. The lyrics are 'late For my love has turned to hate; You may be lone - some'.

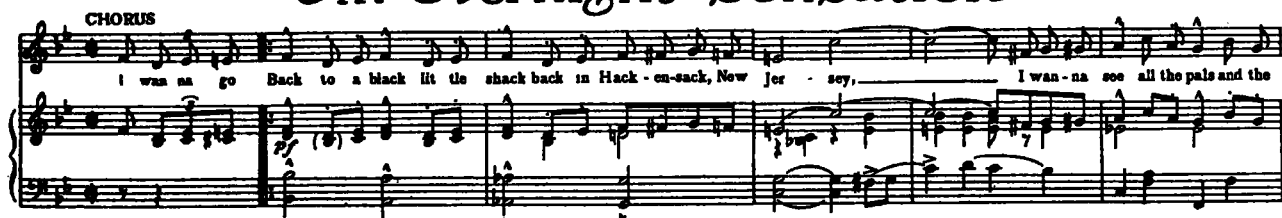
But you'll be lone-some a - lone. You may be lone.

This system contains the fifth line of the song. The vocal melody has a long note followed by a dash, then continues. The piano accompaniment has a triplet of eighth notes. The lyrics are 'But you'll be lone-some a - lone. You may be lone.' The system ends with a double bar line and repeat signs.

Three Big Radio Hits!

"Back In Hackensack, New Jersey"

An Overnight Sensation



"Sweetest Little Rose"

In Tennessee

A Lullaby

by Cal DeVoll



"Sunshine Of Mine"

(I Call You Sunshine)

The Big Radio Fox-Trot Hit!



Copyright 1933 by Ted Browne Music Co. Inc., 218 So. Wabash Ave., Chicago, Ill.
International Copyright Secured All Rights Reserved

For sale by all dealers or send direct to us, 25¢ postpaid
TED BROWNE MUSIC CO. Inc.
218 SOUTH WABASH AVE. CHICAGO, ILL.