

2. Stimme (Alto)

Venezianische Canzonen

zu vier Stimmen

1608

(Mönkemeyer)

B. S C H O T T ' S S Ö H N E · M A I N Z

zu Edition Schott 4664

Venezianische Canzonen

Herausgegeben von Helmut Mönkemeyer

I

Luzasco Luzaschi
(1545–1607)

5 1

10

15 20

25

1 30

35

40

45 50

II

Giuseppe Guami
(um 1540–1611)

4 5 10

canto

15 b b

20

25 30

35

40 45

50

55 #

60 #

65 70

75

La Mazzuola

III

Florentio Maschera
(um 1540–1584)

1 5 10 15 20 25 30 35 40 45 50 55 60 65 70 75 80 85 90 95 100

La Fontana

IV

Florentio Maschera
(um 1540–1584)

5

10

15

20

25

30

35

40

45

50

55

60

65

70

75

80

1.

2.

V

Giovanni Battista Grillo
(um 1600)

1 5 #

10 2 15

20 5 25

30 1 35 1

40 45

50 55

60 #

65 70

75

80 # 85 2

90

95

VI

Giovanni Battista Grillo
(um 1600)

1 2 5

10 15 2

20 2 25 1. 2.

30

35 40

45 2 50

55 2

60

65



70

2

75



80

2

85



90



95

100



VII

Giovanni Battista Grillo
(um 1600)

5



10

15



20



25

30

#

(Orig. $\frac{3}{4}$)



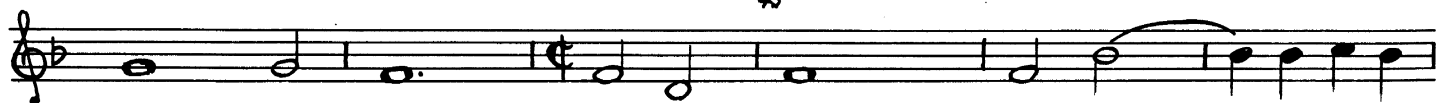
35

2

40



45



50 55 60 65 2 70 1 75 1. 2. 80

This system contains measures 50 through 80. It features a treble clef and a key signature of one flat. The music includes various rhythmic values such as eighth and sixteenth notes, as well as rests. Measure 65 contains a fermata over a whole note. Measure 70 has a first ending bracket. Measure 75 has a second ending bracket. Measure 78 has a flat (b) above it. The system concludes with a double bar line.

VIII

Girolamo Frescobaldi
(1583–1643)

5 10 15 20 b 25 b b b b 30 3 35 40 45 b

This system contains measures 5 through 45. It features a treble clef and a key signature of one flat. The music includes various rhythmic values such as eighth and sixteenth notes, as well as rests. Measure 15 has a sharp (#) above it. Measure 20 has a flat (b) above it. Measures 25-28 have flats (b) above them. Measure 30 has a sharp (#) above it. Measure 33 has a '3' above it. Measure 40 has a sharp (#) above it. Measure 45 has a flat (b) above it. The system concludes with a double bar line.